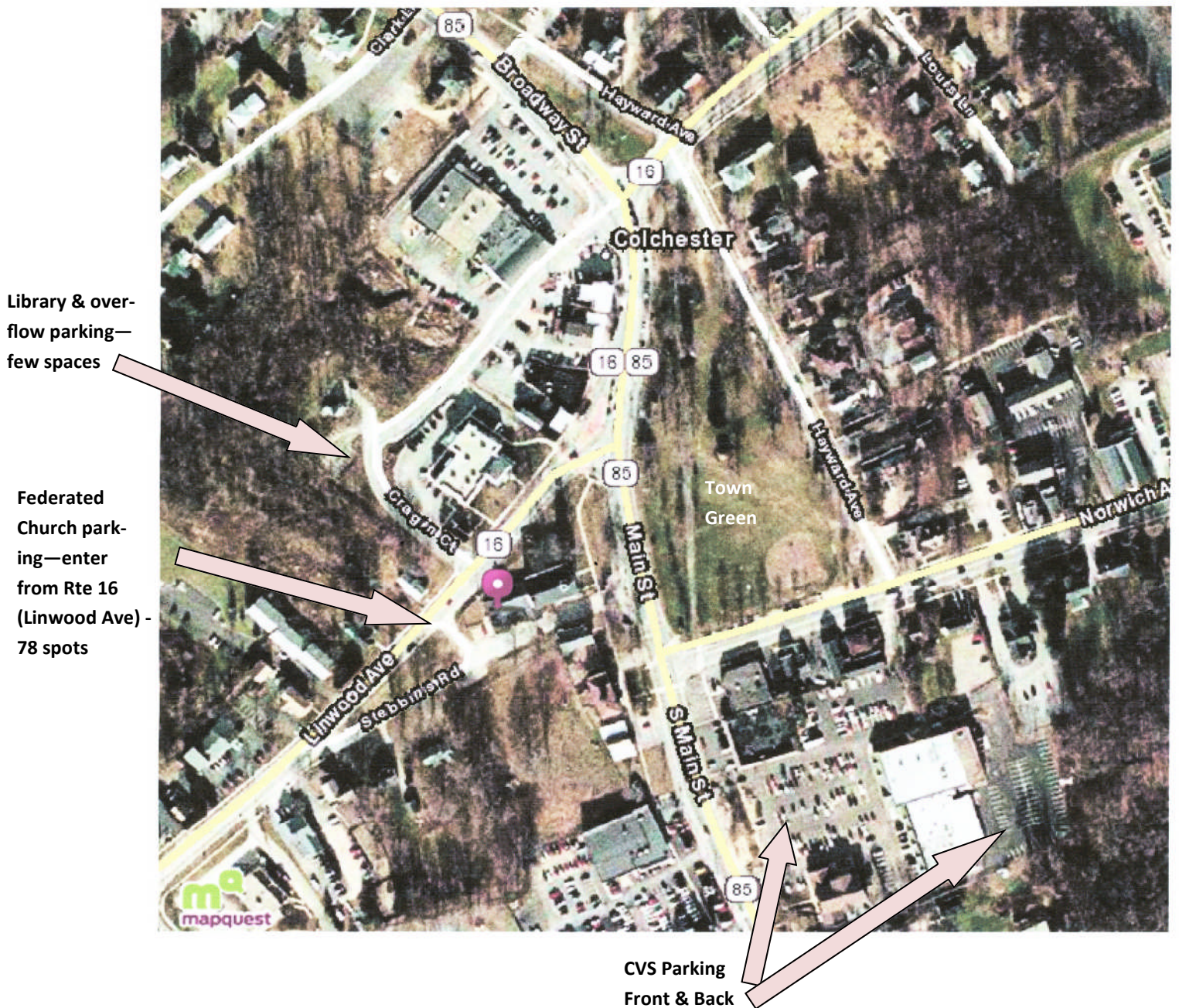


World Tai Chi Day—Colchester—Additional Parking Information



Colchester—Additional Parking Options—CAR POOLING IS IMPORTANT!

Please respect local neighbors and merchants—residents need to be able to access their properties and merchants need to keep enough spaces open for their Saturday clientele. Park as far from their buildings as possible.

Hayward Ave—East side of green—Teachers—use to unload for set up only, then move your cars to another location to leave this area for attendees throughout the day. Parking on both sides of the street.

Library—Few spots behind the library and an overflow lot below and across the street from the library lot.

Federated Church—(78 spots) enter from Rte 16 (Linwood Ave). Fill the gravel lot accessed between the two white houses first then the paved lot. There is room for 4 handicap parkers immediately behind the church (permit required).

CVS Parking—Access from Rte 85, there are a number of spots in the front lot and many more behind the building (go around the building to the right).

CAUTION: Rtes 16 & 85 are very busy roads. For your safety, please use the crosswalks.